

Product Overview

- Adjustable height from 57 cm to 87 cm (other heights available with UH1/UH4 options)
- 2 liftable columns
- Trespa™ chemical resistant worksurface W90 x D75 cm
- Weight capacity: 250 kg
- Worksurface can easily be lifted up or down by commuting an electrical switch
- Worldwide electrical compatibility
- Recommended use with liquid chromatograph
- HPLC Ionbench is on caster wheels and can easily be moved
- Convenient access to the top of your HPLC or UHPLC
- Safe access to solvents

Liftable
motorized
worksurface



Control :



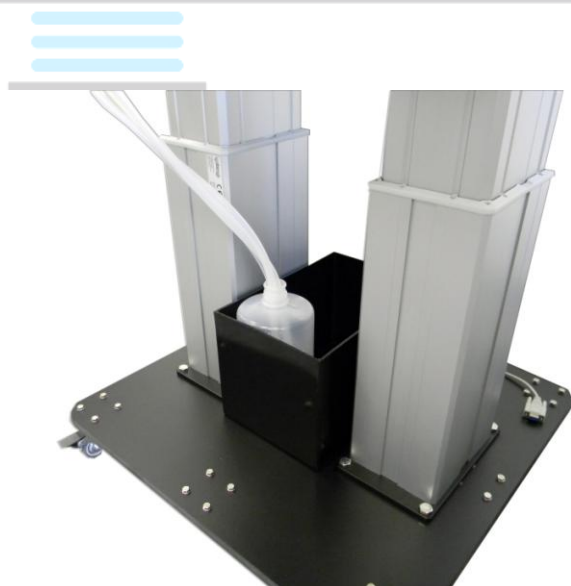
Standard switch

- Up and Down



Optional position display with 3 memories (ref : BCHPOS)

- Up and Down
- Memory function (3 in total)
- Display for height indication



Optional solvent waste container (ref : SOLV)



Standard slit for pipe and tubing



Optional IEC power strip (ref: IECKIT)

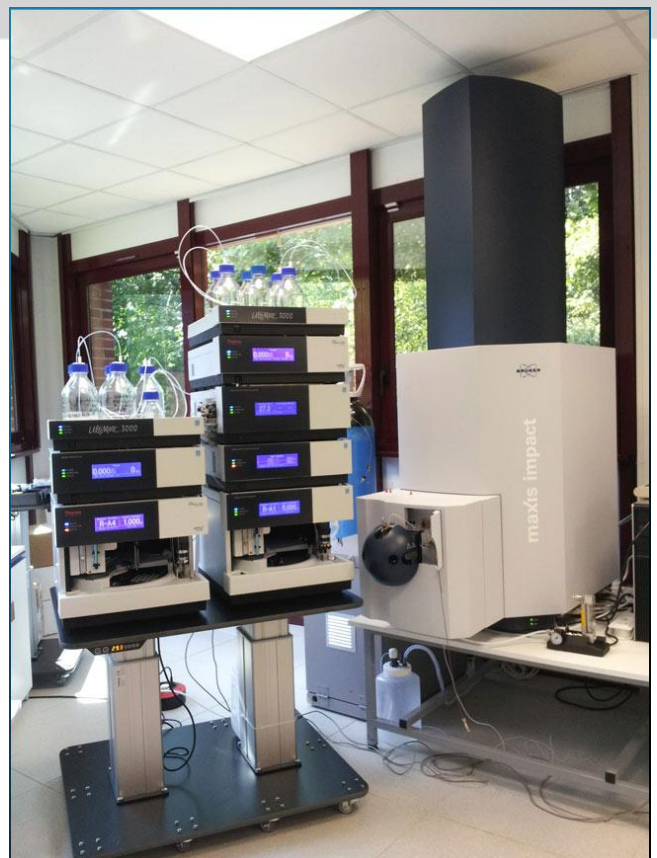


Optional PC holder (ref: PC1)



Optional monitor arm + keyb. shelf (ref: ARM1)

Photo example :



Detailed Technical specifications :

- Compatible with 230V/50HZ or 110V/60HZ
- Electronic components are all compliant with RoHS directives (Restriction of Hazardous Substances Directive).

External Dimensions	BCHLC9075 model
Depth	75 cm / 29,5 inch
Width	90 cm / 35,4 inch
Height	From 57 to 87 cm / From 22,4 to 34,3 inch Or with UH4 option: From 62 to 97 cm / from 24,4 to 37,7 inches Or with UH1 option: From 45 to 75 cm / from 17,7 to 29,5 inches
Weight :	35 kg / 77 lb

Summary

Description	Part-number
Ionbench-LC BCHLC9075	BCHLC9075
Optional upgraded height from 62 to 97 cm (24,4 to 37,7 inches)	UH4
Optional custom height from 45 to 75 cm (17,7 to 29,5 inches)	UH1
Optional solvent waste container (30x20x20 cm)	SOLV
Optional 6 IEC plug, with 6 cords (you can order up to 2x IECKIT per bench)	IECKIT
Optional position display with 3 memories	BCHPOS
Optional CPU holder	PC1
Optional information control package (Flat screen monitor arm + keyboard shelf)	ARM1

